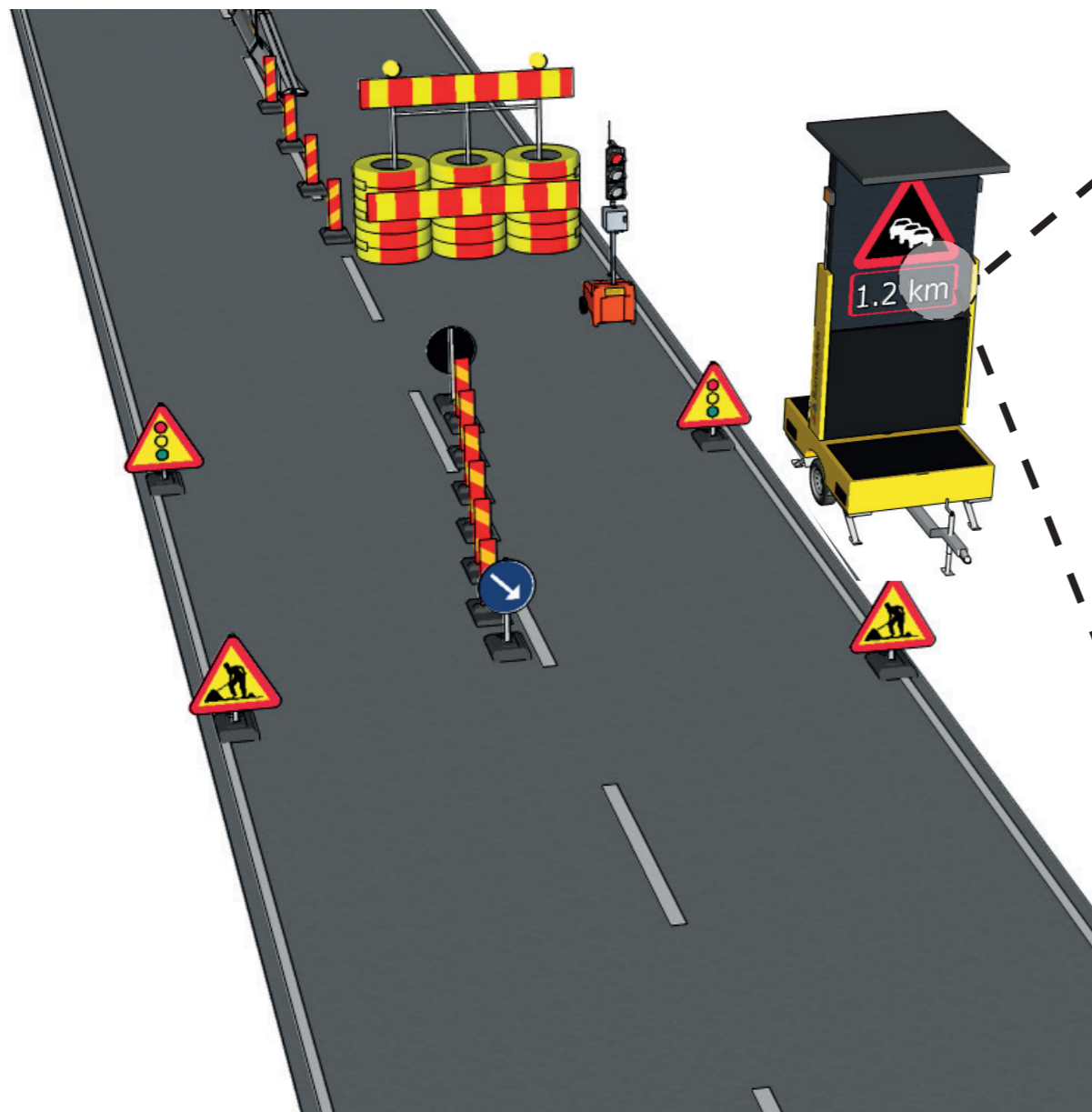
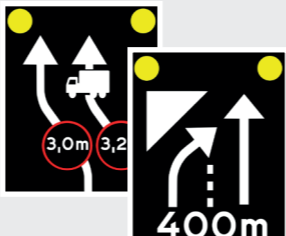




Digital product: Variable Message Sign (VMS)



Overview

The **Variable Message Signs** are connected to the digital portal from which real-time messages and/or fully automated messages are controlled by the operator.

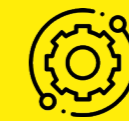
	<p>Variable messages/road signs</p> <ul style="list-style-type: none"> • Defined road signs, free text or own illustration • Static, blinking or scheduled information
	<p>Automatic queue warning system</p> <ul style="list-style-type: none"> • Automated messages when queues occur, adjustable on length or speed of traffic flow, e.g. 1 km queue or speeds below 40 km/h
	<p>Real-time updating of potential routes</p> <ul style="list-style-type: none"> • Live updated information of optional routes with time approximation depending on traffic flow and queues

Benefits



Increased safety

...for road users by digitally controlled live messages through informative display



Better service

...controlled through digital connection with customizable message, with scenarios automatically triggered dependent on current traffic flow



Lowered cost

...quick and easy deployment on site reducing labour and optimizing traffic flow



Improved sustainability

...reducing the use of trucks for information boards, thus lowering CO2 emissions with energy efficient VMS trailers